

Resurrecting the Falconbridge Copper's Cu-Au Opemiska Mine, Chapais, Québec, Canada

Explorateurs – Innovateurs de Québec inc. (Ex-In)

860, boulevard de la Chaudière, suite 201

Québec (Québec) G1X 4B7, Canada

Office : (+1) 418-877-4249

Website : www.ex-in.ca

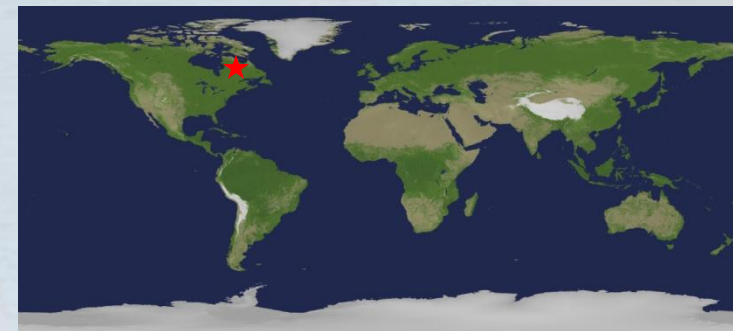
Location of the Opemiska property

- ✓ Located in the Canadian province of Quebec → one of the world's most attractive mining jurisdictions
- ✓ Located in the Abitibi Greenstone Belt → one of the world's most prolific gold and base-metal-producing areas



PROVINCE OF QUEBEC

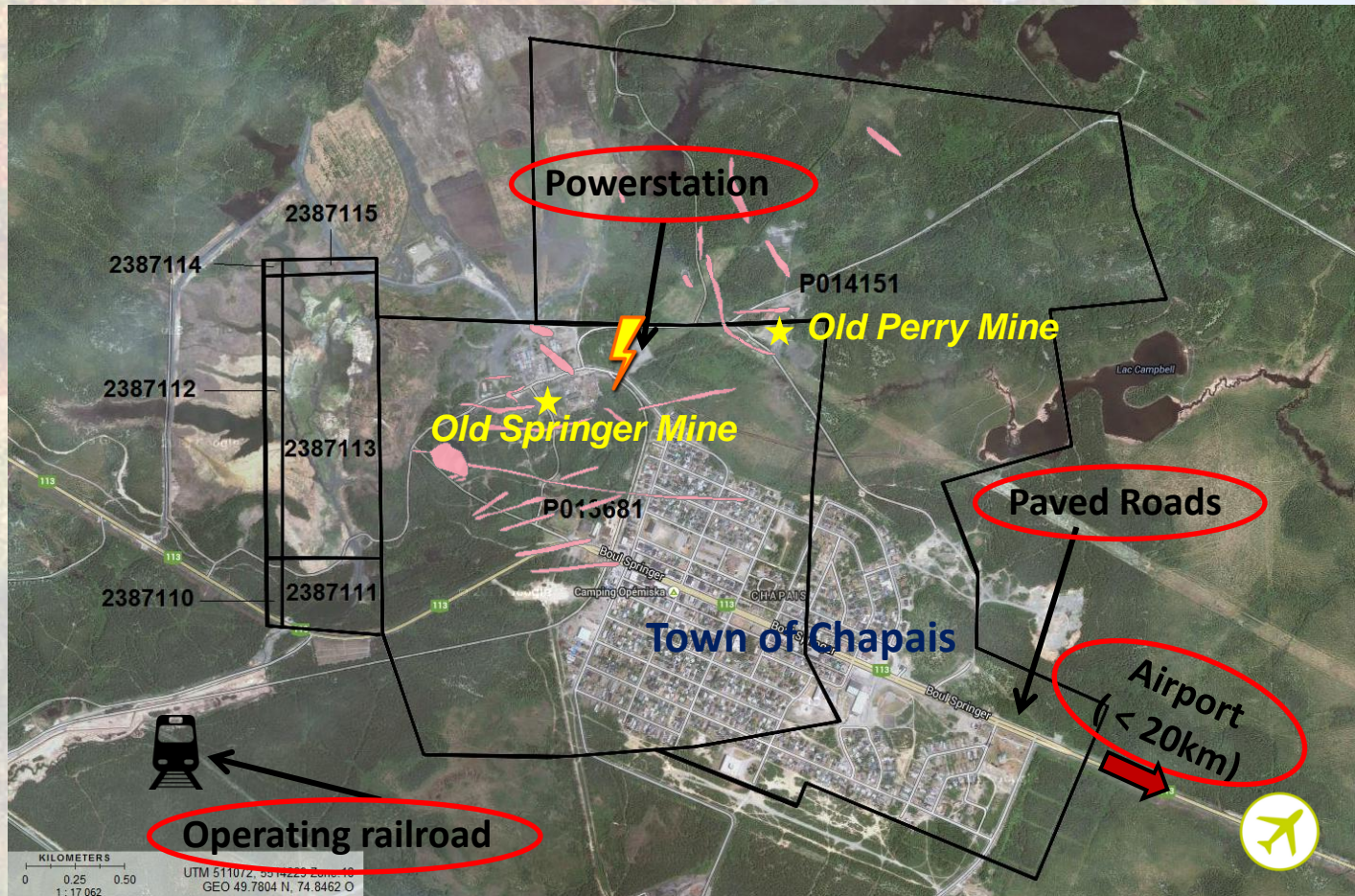
- Mining Friendly Jurisdiction
- Tax Incentives
- Great infrastructures
- Exceptional mining potential
- One of the best geoscientific databases in the world



Opemiska property - 2015

Location of the Opémiska property

- Contiguous to the town of Chapais = **infrastructures**, « **mine-friendly** » Mayor
- **8 mining claims** covering the old Springer & Perry mines ($\pm 5\text{km}^2$)
- Mining rights owned at **100%** by Ex-In (private company)



History of Opemiska property

**Mining operation
1953-1991**

23 million tons
average grades of
2.4% copper and
1.47 g/ton of gold*



* For Springer & Perry mines

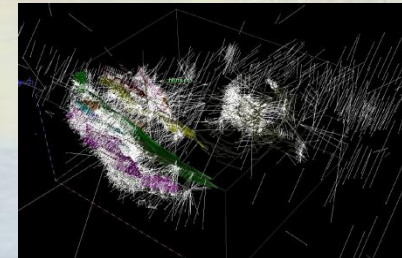
**Ex-In stake
1993**

Recovery of the old maps
and DDH logs



**Compilation, exploration
2009-2014**

**Geological potential
estimation of the
Opemiska property**

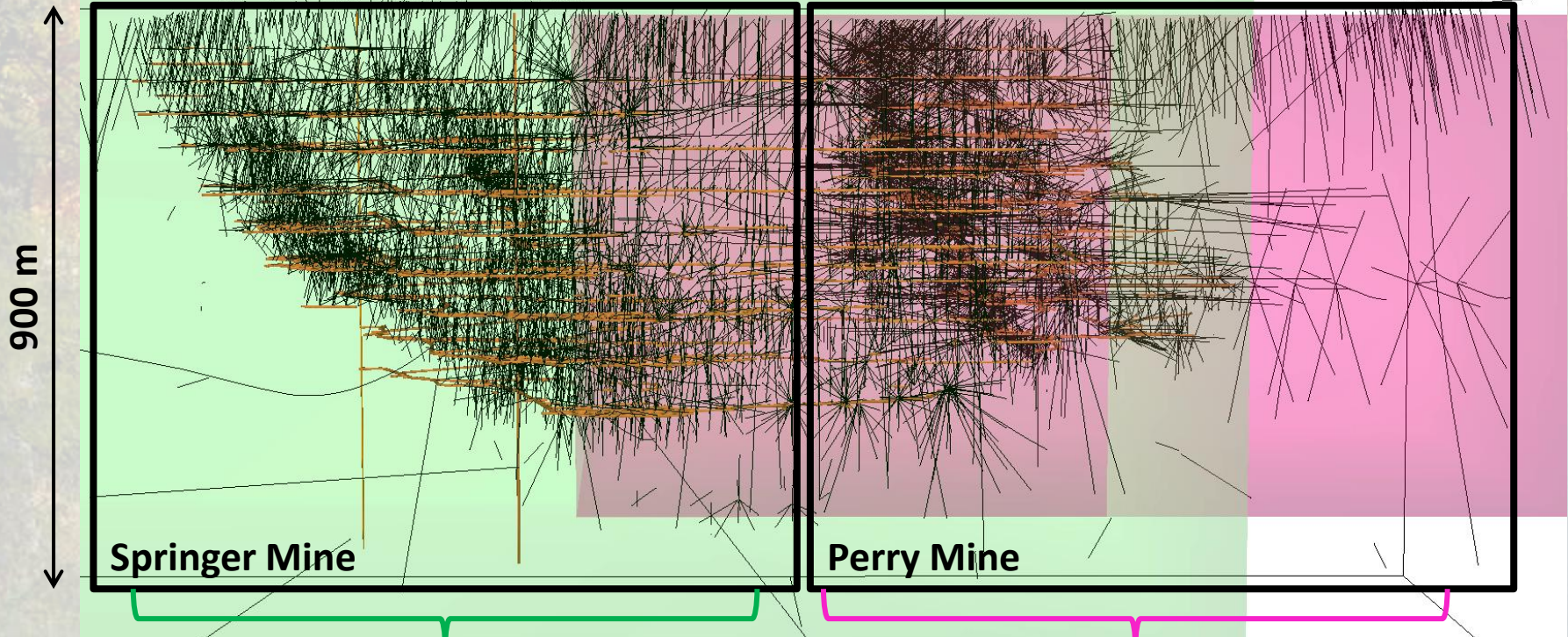


Historical data

- 14 500 Historical DDH
- 853 795 meters drilled
- More than 300 000 assays
- Thousand of maps/sections

**Today value of the DDH:
About 50 000 000 \$CAD**

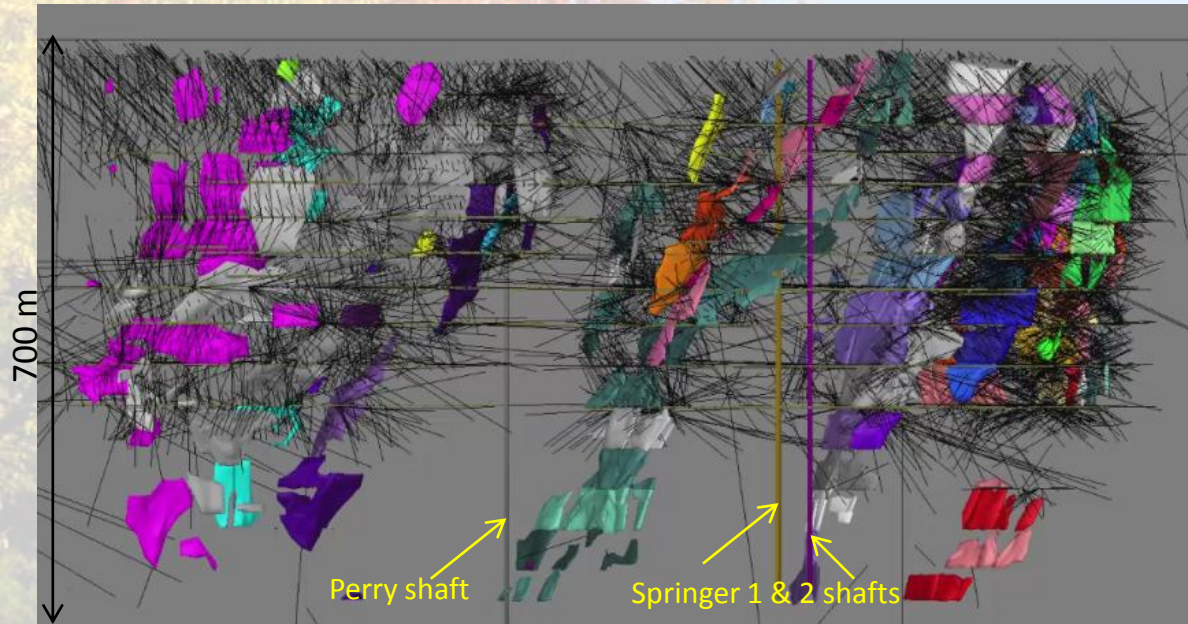
Digitized data*!



RPA Report March 2013

RPA Report July 2014

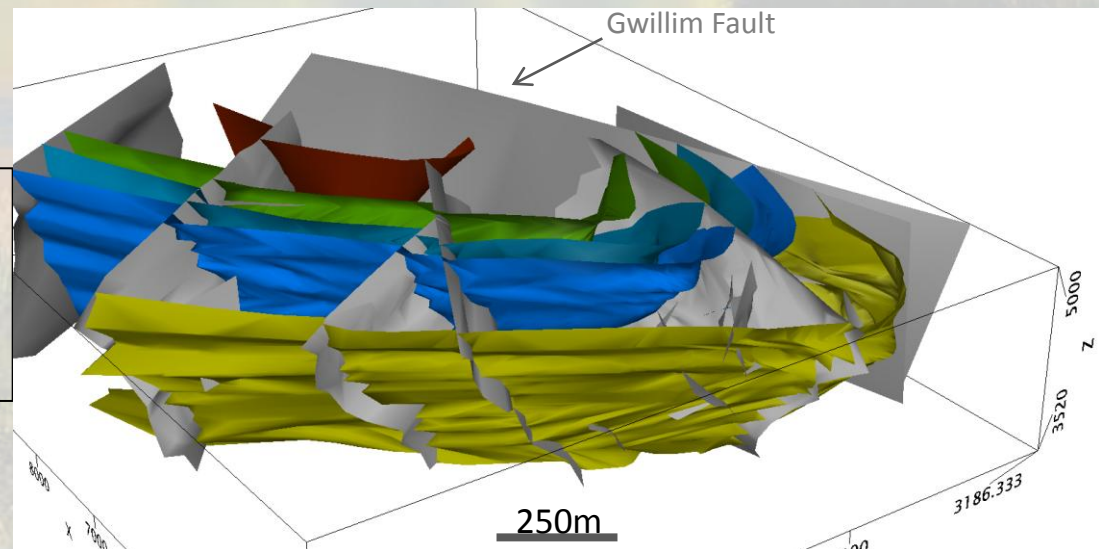
3D



3D modeling of old stopes of the mines from the sections / mine plans

Simplified 3D modeling of the geology from the old geolocial maps

(first 400 meters / 1300 ft / 9 levels)



2010 DDH

Best intersections of 2010 :


DDH	From (m)	To (m)	Length* (m)	Cu (%)	Au (g/t)	Ag (g/t)
OP-2010-03	38.00	39.00	1.00	8.98	2.52	63.60
OP-2010-12	40.50	42.00	1.50	3.14	30.39	
OP-2010-12	62.00	63.00	1.00	8.01	8.68	
OP-2010-13	66.00	67.50	1.50	5.31	15.80	
OP-2010-19	36.00	37.50	1.50	16.65	2.06	
OP-2010-19	37.50	39.00	1.50	17.38	1.43	

**lengths measured along the drill core*



Geological potential

Geological potential of the Opemiska property (Perry & Springer mines) :

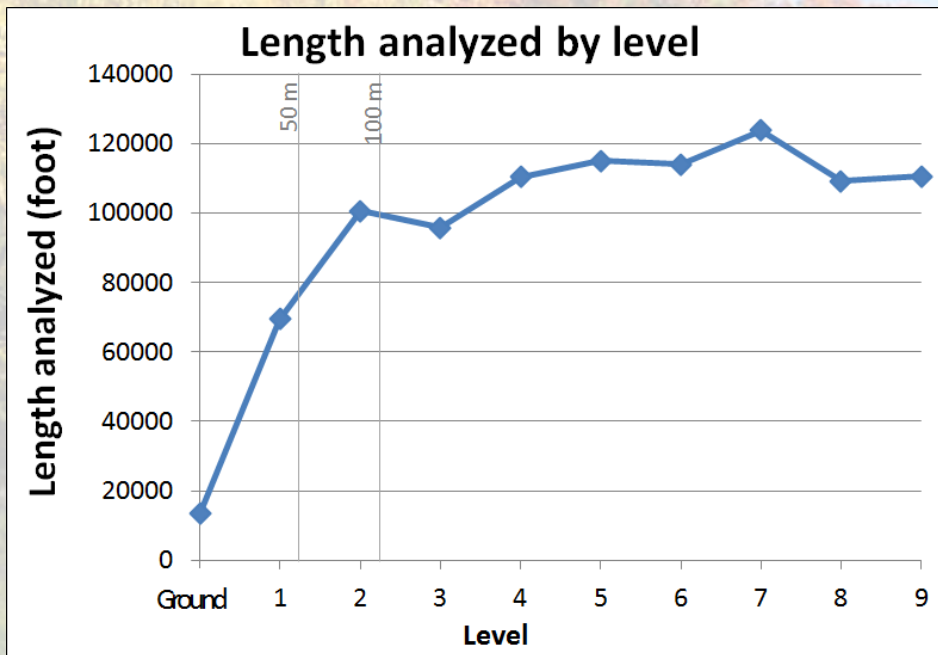


Estimated potential of about 40 million short tons at an average grade of 1.0% Cu and 0.5 g/t Au



3.2 B\$US

Exploration potential



First 3 levels of the mine less covered by drilling (= fewer assays) than the levels below.




Drilling from surface to the level 3 may result in a increase of the exploration potential near surface

➔ High potential to increase the geological potential

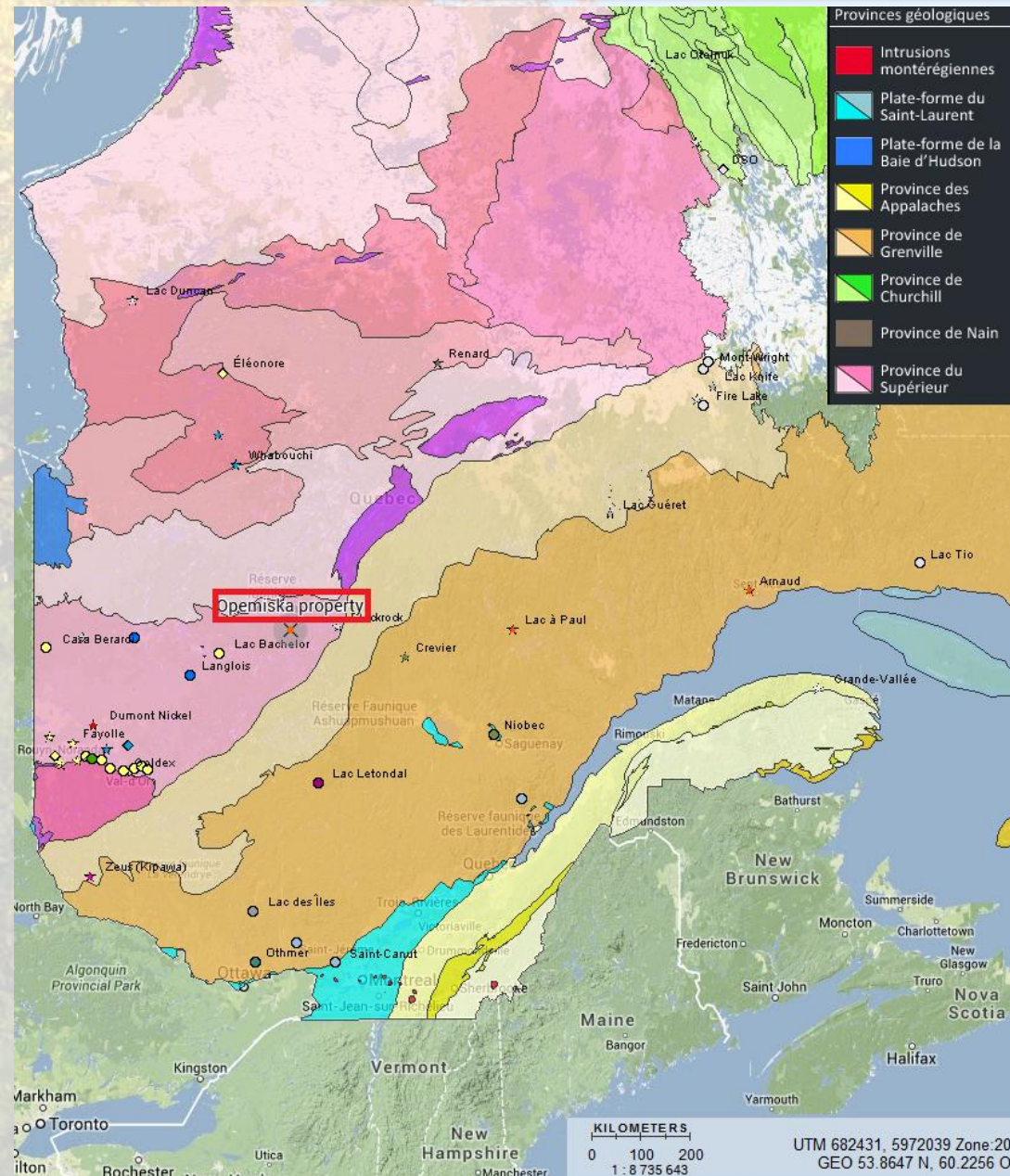
➔ 22 new drilling targets suggested by RPA ready to be drill!





Geology of the property

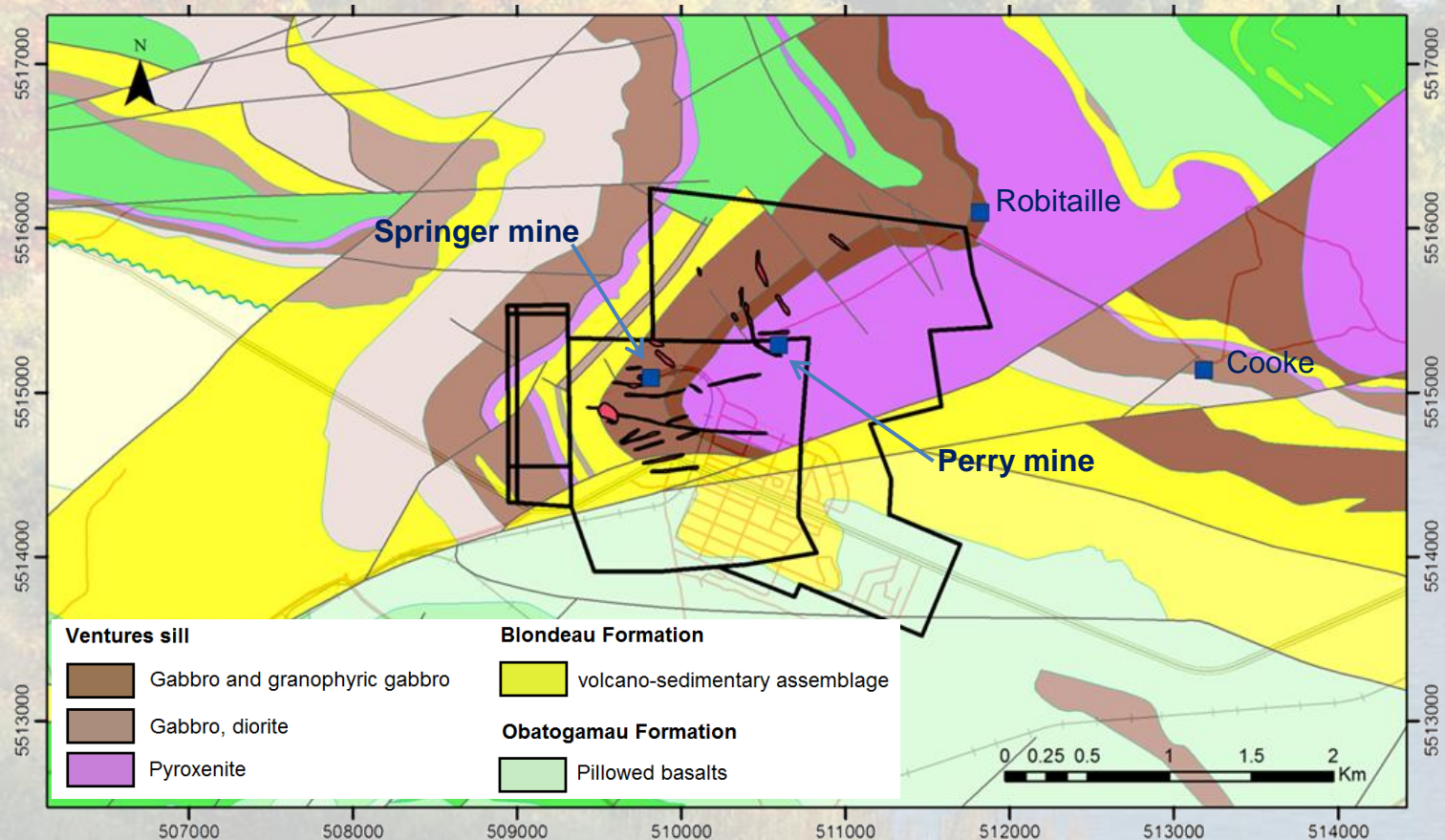
Geological location



- **Superior province**
 - **Abitibi subprovince**
(largest number of open mines)
 - **Group of Roy**

Geological location

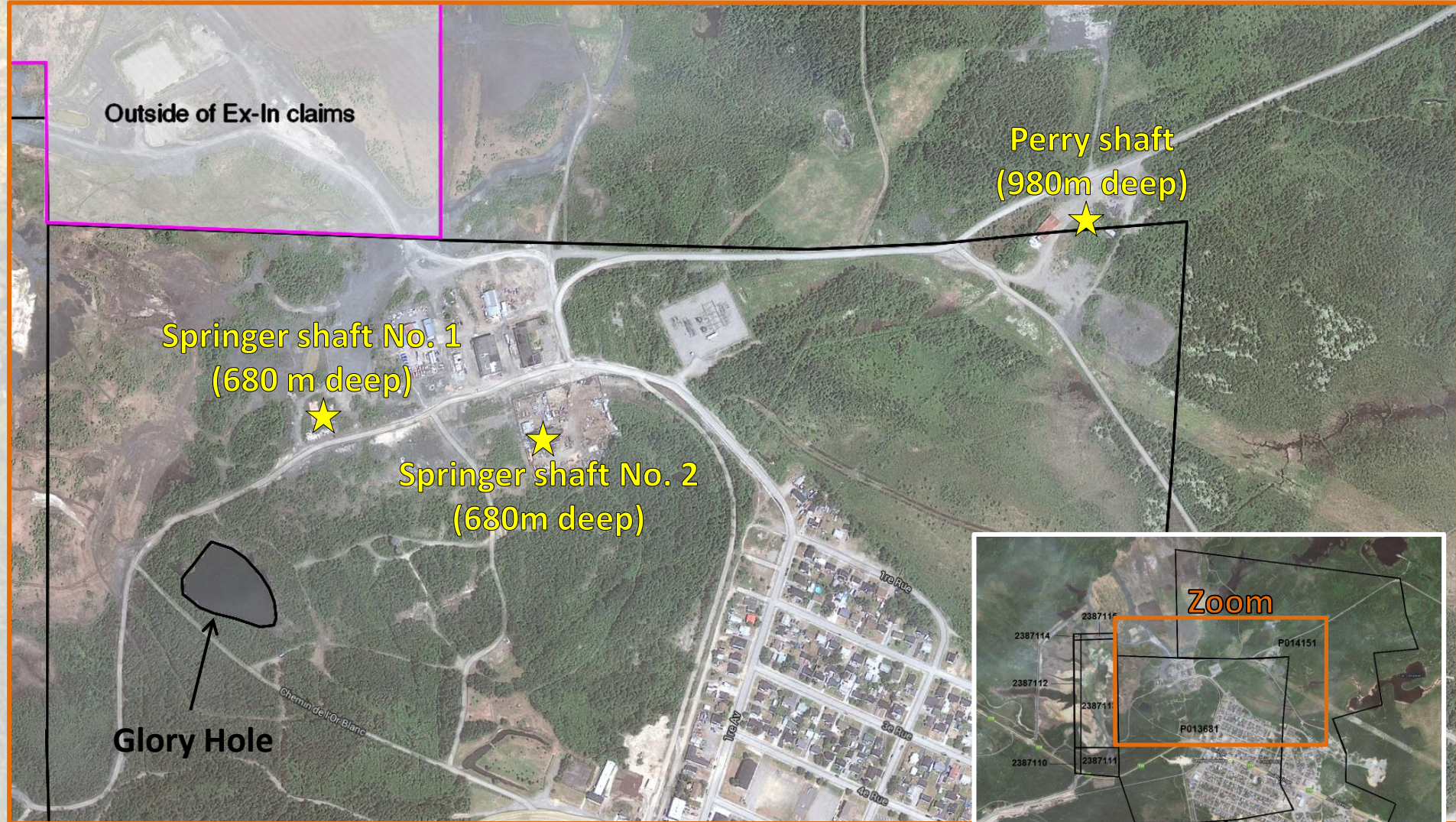
- **Cu-Au-Ag** mineralization : semi-massive to massive chalcopyrite-magnetite-quartz-carbonate ± pyrite (FeS₂), pyrrhotite (FeS), gold (Au), sphalerite (ZnS), gersdorffite (NiAsS) and galen (PbS) and minor amounts of molybdénite, cobaltite, scheelite, bornite and malachite
- Subvertical mineralized veins and veinlets occur within regional overturned anticlines in **Ventures mafic sills**
- Syn-tectonic to post-tectonic mineralization





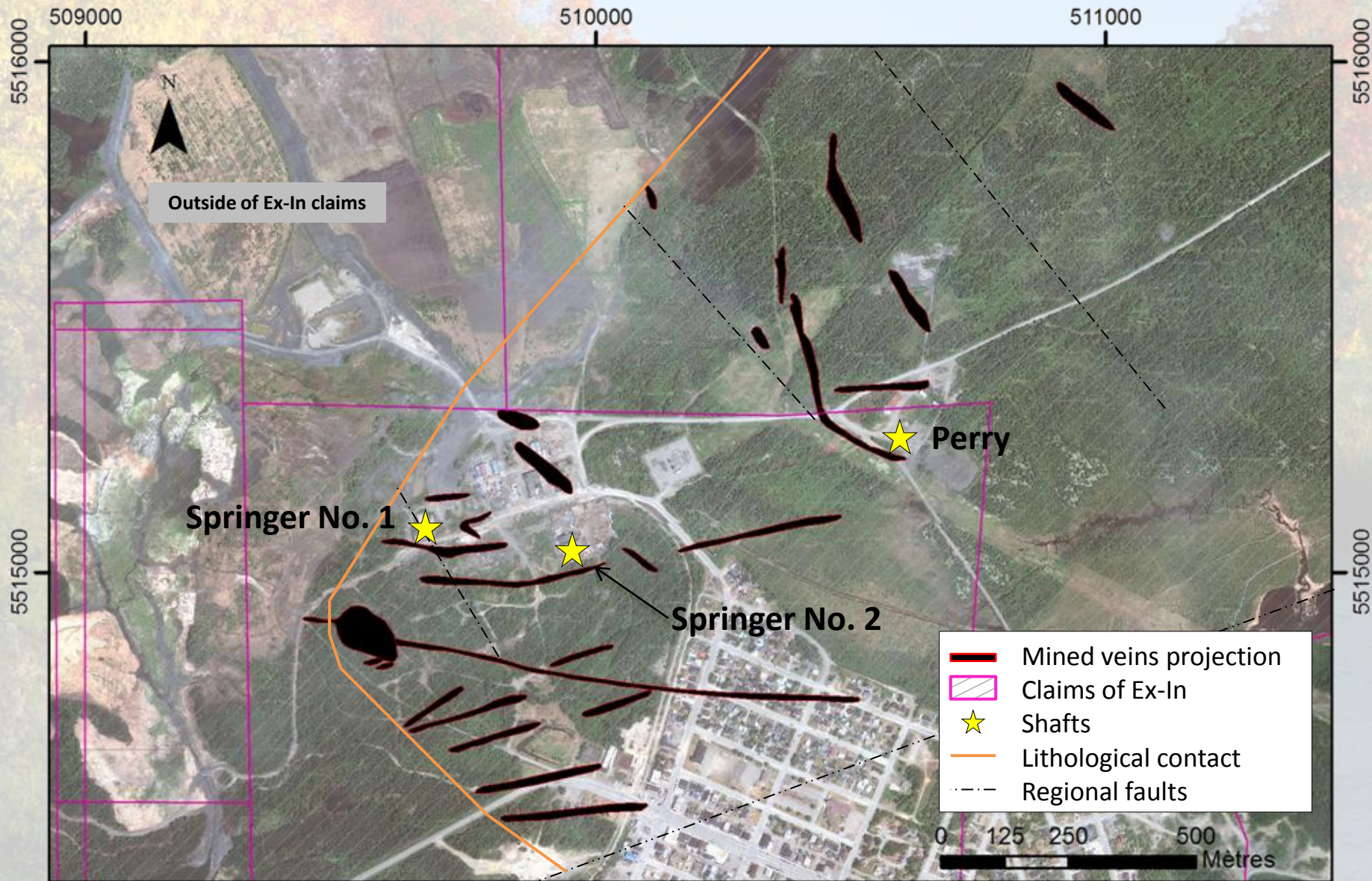
Presentation of the property

Zoom on the old shafts



Opemiska property - 2015

Surface projection of the mined veins



Key points

- ❖ **Property owned 100% by Ex-In** (small private company) and **open for option/purchase**
- ❖ Exploration potential estimated at over **40 million short tons** at an average grade of **1.0% Cu** and **0.5 g/t Au**
- ❖ High potential **to increase** tonnage and grade after new drilling suggested by RPA
- ❖ Based on historical and recent metallurgical test, **high recovery of copper and gold** is anticipated
- ❖ Will very likely lead to a combination of **open pit(s) and/or large underground operations**
- ❖ **Mining operations could start very fast** (about 3 years) since airport (within 20km), operating railroad, paved road, power station, power line and people are already in site.

Need more information ?

Explorateurs – Innovateurs de Québec inc. (Ex-In)

860, boulevard de la Chaudière, suite 201

Québec (Québec) G1X 4B7, Canada

Office : (+1) 418-877-4249

Website : www.ex-in.ca

Pierre Gaucher, Eng., MBA.;
President

Cell : (+1) 418-261-5552

Email : pgaucher@gdd.ca

Charlotte Athurion, M. Sc.;
Junior Geologist

Cell : (+1) 418-271-0481

Email : charlotte.athurion@gmail.com